

OTP Hike #0196

Crystal Lake to South Mt. Hawkins Lookout.

10 miles round trip
2800 ft. elevation gain
2800 ft. elevation loss
Classification: Moderate.

CARLIN HIKEMASTER
29 SEPTEMBER 1993

Note that this is a shortened version of #79 in "One Hundred Hikes-Trails of the Angeles".

FEATURES:

There never was a gal like Nellie Hawkins, beautiful waitress at Doc Beatty's popular Squirrel Inn, high up the North Fork of the San Gabriel where Coldbrook Campground lies today. From 1901-1907, Miss Hawkins charmed and attracted miners, hunters, campers, just about every mountain man for miles around. Nellie is long gone now, the doors of the Squirrel Inn closed for over a half a century, but the popular waitress will never be forgotten. Her name is eternally transfixed on two summits above Crystal Lake basin, and two other high points along the same ridge honor her informally. The peaks are called Mt. Hawkins and South Mt. Hawkins, with the two bumps along the ridge in-between are known to hikers as Middle Hawkins and Sadie Hawkins.

Today's trip will climb the Jeffery Pine forested west slope of South Mt. Hawkins, bagging the peak of this mountain where there was once a Forest Service lookout tower (one write-up implies that the tower is still there). At the peak, there are continuous views into the Crystal Lake Basin to the south and west, the sharp ridge leading northward toward the other Hawkins peaks, and to the east, the wild, trail-less Iron Fork Country.

DESCRIPTION

Drive to the upper (northern) edge of the Crystal Lake Recreation Area, 25 miles from Azusa on Hwy. 39. Park in the large dirt clearing to your right just before the locked gate.

The trailhead is marked by a metal sign across the road from the parking area. Follow the trail as it makes a gradual ascent through oak, pine and cedar. When the trail crosses the South Mt. Hawkins fire road, turn right and take the fire road up to the South Mt. Hawkins summit.

Return to the trail head via the same fire road.

117°51'00" W

117°50'00" W

TOPO! map printed on 08/05/00 from "LA.TPO" and "Untitled.tpg"

117°49'00" W

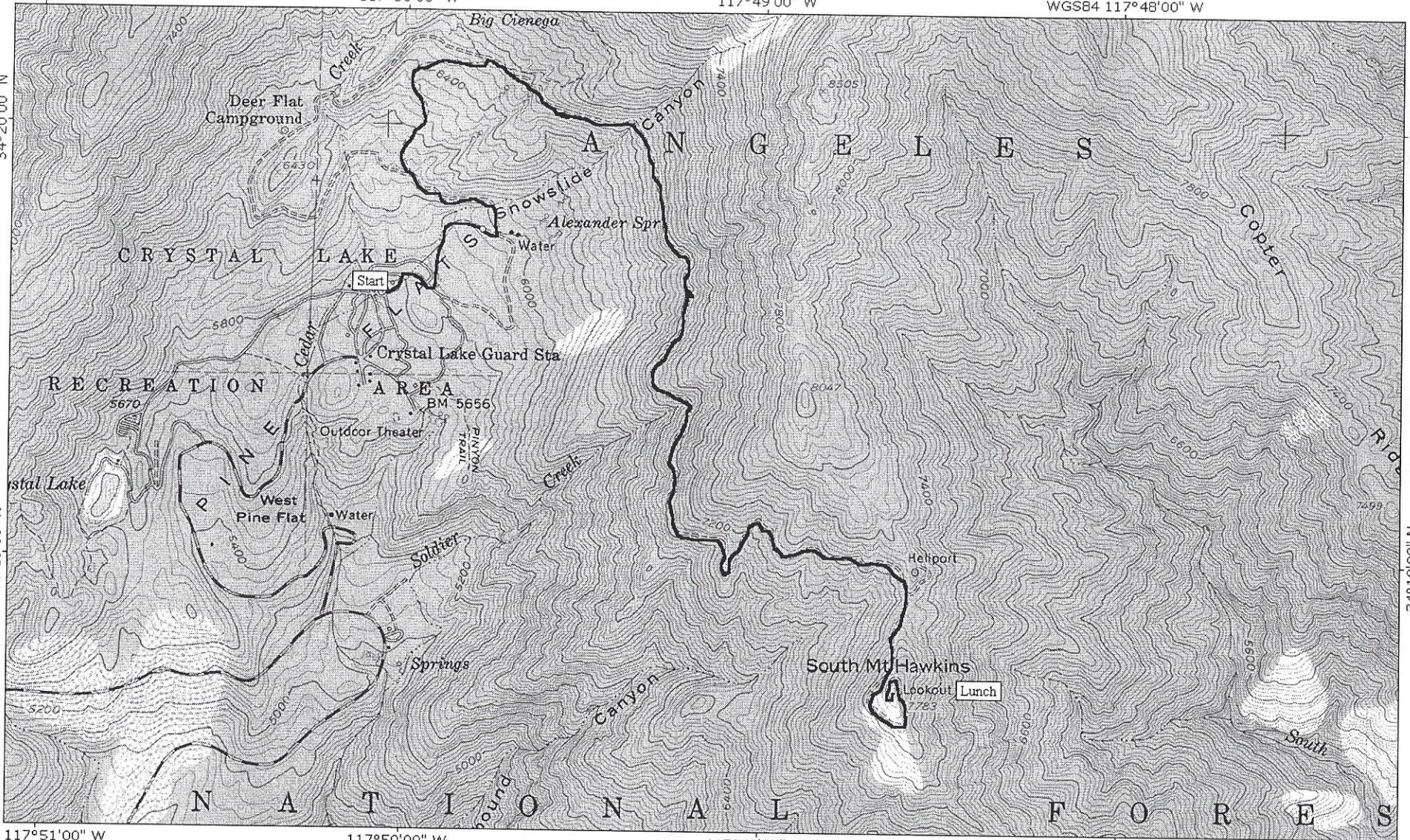
WGS84 117°48'00" W

34°20'00" N

34°20'00" N

34°19'00" N

34°19'00" N



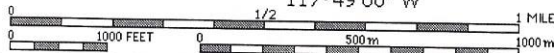
117°51'00" W

117°50'00" W

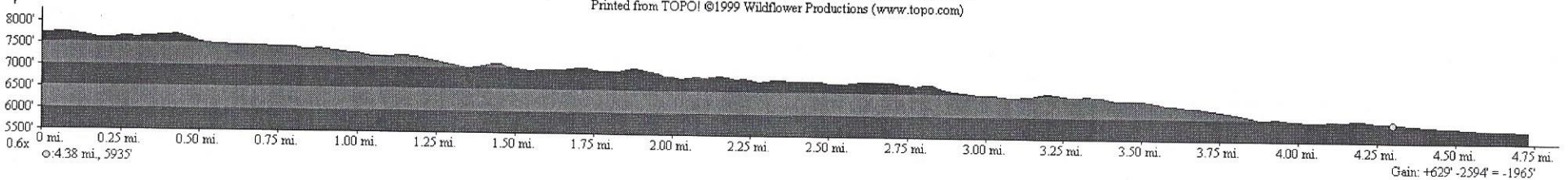
117°49'00" W

WGS84 117°48'00" W

TN 14°



Printed from TOPO! ©1999 Wildflower Productions (www.topo.com)



Gain: +629' -2594' = -1965'