

5/8/96

RABBIT PEAK #1 --May 8, 9:30 A.M.

Irene

TRAILHEAD DIRECTIONS

Almost the same as Arnie's hike to Iron Mt. #3.--Drive North on Angeles Forest Highway to paddle 15.18, about 9.4 miles from where it starts at Angeles Crest Highway, 9.5 miles from 1-210 at La Canada. You will pass Monte Cristo Station on the left and Upper Big Tujunga Canyon Road on the right. Turn right into Monte Cristo campground where a dirt road runs from the N end of the campground. We hiked ^(the road) with Arnie. Continue driving 3/10 mile and park on the left side where there is space for 5 cars.

THE HIKES

Hike past Black Cargo Mine for 0.5 m. to a road fork and continue only a short distance where our options begin.

OPTION 1: Arnie Foss will probably make a frontal assault on Rabbit, going straight up a very steep firebreak.

OPTION 2: I will continue on the dirt road about 0.5 m. to a power line at the end of a ridge coming down a S ridge of Rabbit Peak #1 and follow the dirt road still further until the power line towers are no longer contiguous to the road. Then I'll make a short bush-wack for several hundred yards to the peak's summit. (The bush-wacking is easy for there aren't many bushes.)

OPTION 3: Continue on the dirt road, ignoring the other options and hike until lunch time. I will hike the road again after descending the peak. After lunch we can all turn around and head back the same way OR:

OPTION 4: If enough hikers have read this prior to beginning the hike and want to do it, we can carpool to Mill Creek Summit and do OPTION 3, ending at Mill Creek making only a very easy approx. 4 m. hike.

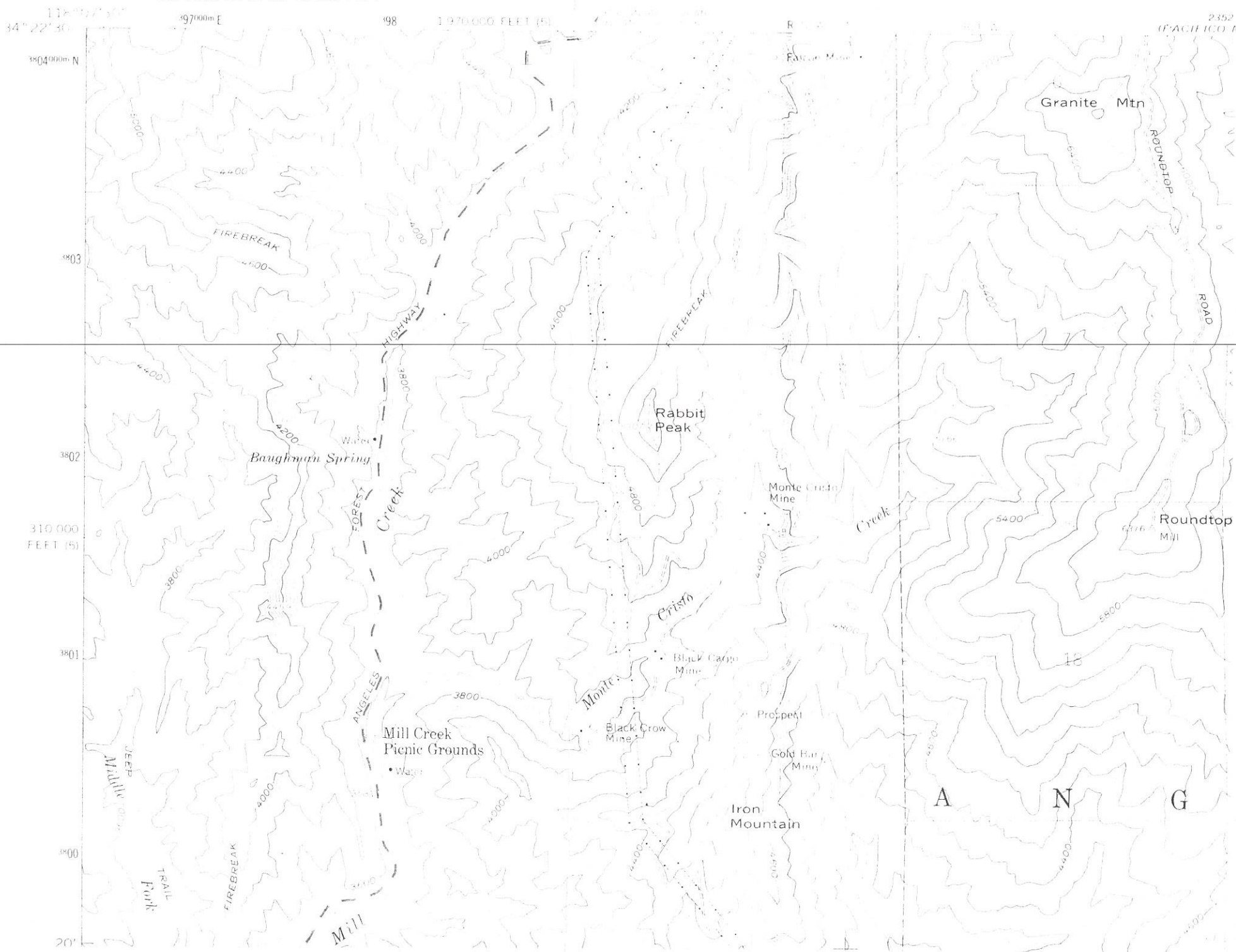
STATISTICS

Rabbit Peak #1 5307' elevation 2.8 m. from parking area to summit via the dirt road 1700' gain, moderate.

Note: The Sierra Club continues from Rabbit to nearby Roundtop, elevation 6316' and beautiful but we will probably have enough hiking without an OPTION 5.

2352 (PARTIAL SECTION)

UNITED STATES
DEPARTMENT OF THE INTERIOR
GEOLOGICAL SURVEY



2352

(PARTIAL SECTION)

118° 22' 30" W

1970000m E

98

1 970 000 FEET (5)

34° 22' 30" N

3804000m N

3803

3802

310 000
FEET (5)

3801

3800

20'

A N G E L E S