

Hike #396

BARE MOUNTAIN

el. 6,388'

Oct. 22

9:30 A.M.

1997

Irene's hike

Facts: probably 5 m. rt.--6 at most
elevation gain--about 1,000'
location: just east of Pacifico

Driving directions: We park in the exact same place as my hike
last year to Pacifico.-----At mileage paddle 53.85, Three Points,
Sulphur Springs Road, take the later, 3N17 for 3.7m. to Adler Saddle.
Turn NE on road 5N04, the road to Little Rock, and park at the end
of the pavement where the road becomes gravel in 1m.

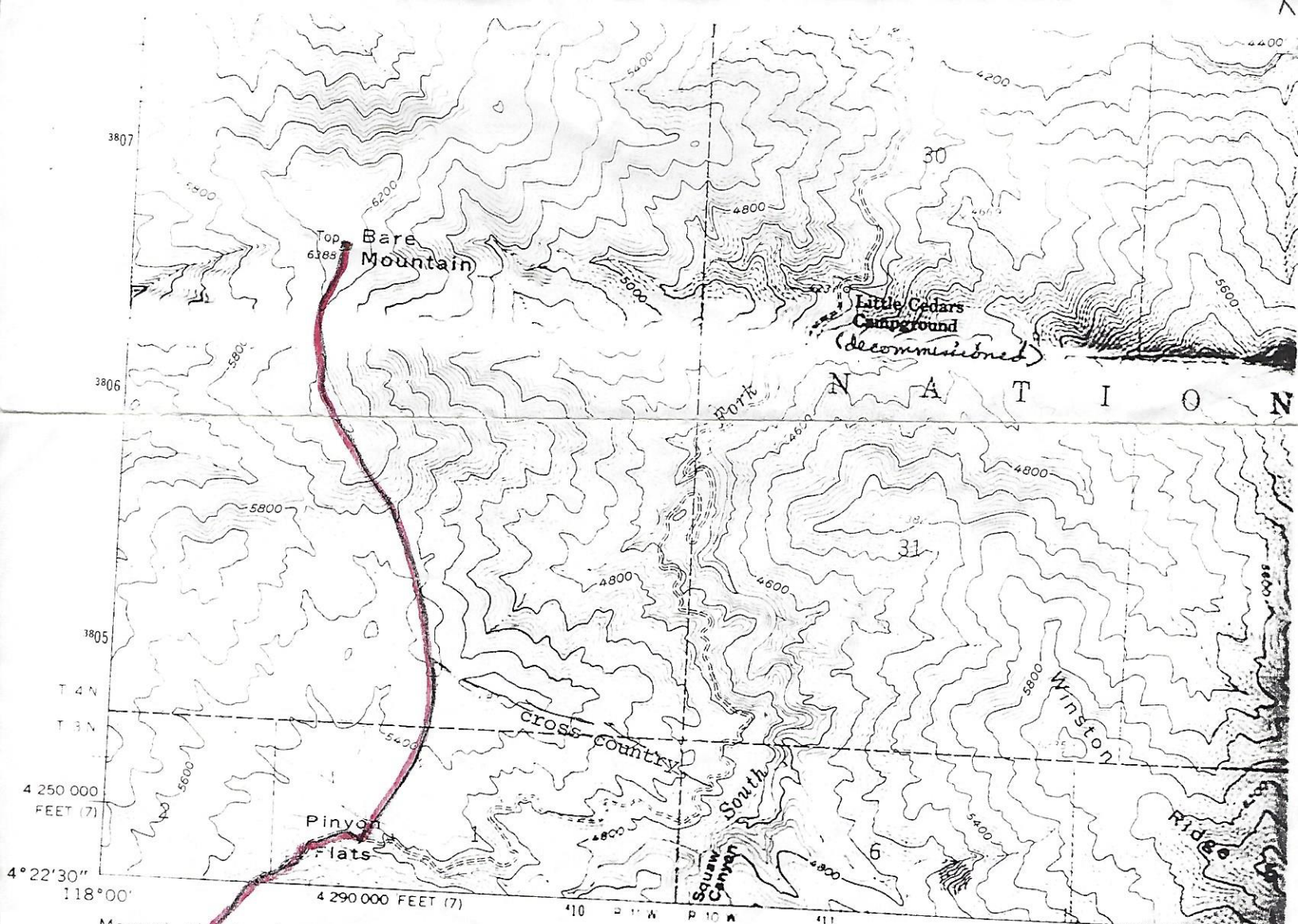
ANGELS HWY (RTE 2)
NORTH RT 2, 26.5 MI
INTERSECTION WITH
SULPHUR SPRINGS RD.

The hike: I selected the peak. Hazrat delineated the route. He has us walking past the first fire break in the old Pinyon Flats shooting area but proceeding up the 2nd on the side of a bridged wash. We follow the fire break to about 6,180' where it becomes a trail.

The peak has 2 register cans, and some interesting stories are in those registers. The climbers liked this hike. I hope you will.

As a reward for surmounting the firebreak you will have a 360° view, Hillyer to Pacifico to the Antelope Valley, Little Rock, and Winston Peak and Ridge.

Suggestions: Bring a windbreaker in case it is needed, and a walking stick. The return is deceptive and if we break up in groups BEFORE we reach 6,180° one or more groups can easily take the wrong firebreak which will add perhaps another 10 m. to the hike and many hours of waiting for the rest of us. Please stick together until about 6,180° on the return and then do whatever you feel like, including cross-country if you want to lengthen the hike.



Mapped, edited and published by the Geological Survey
Control by USGS, NGS, NOAA and Los Angeles County

~~X~~ Parking