

849

Malibu State Park

April 18, 2007

Leader: Grant Trettel

Distance: 5 1/2 miles

Terrain: Trail and Road

Time: Approximately 3 hours

Start Time: 9:30 A.M.

There may be a parking fee

Trailhead Directions:

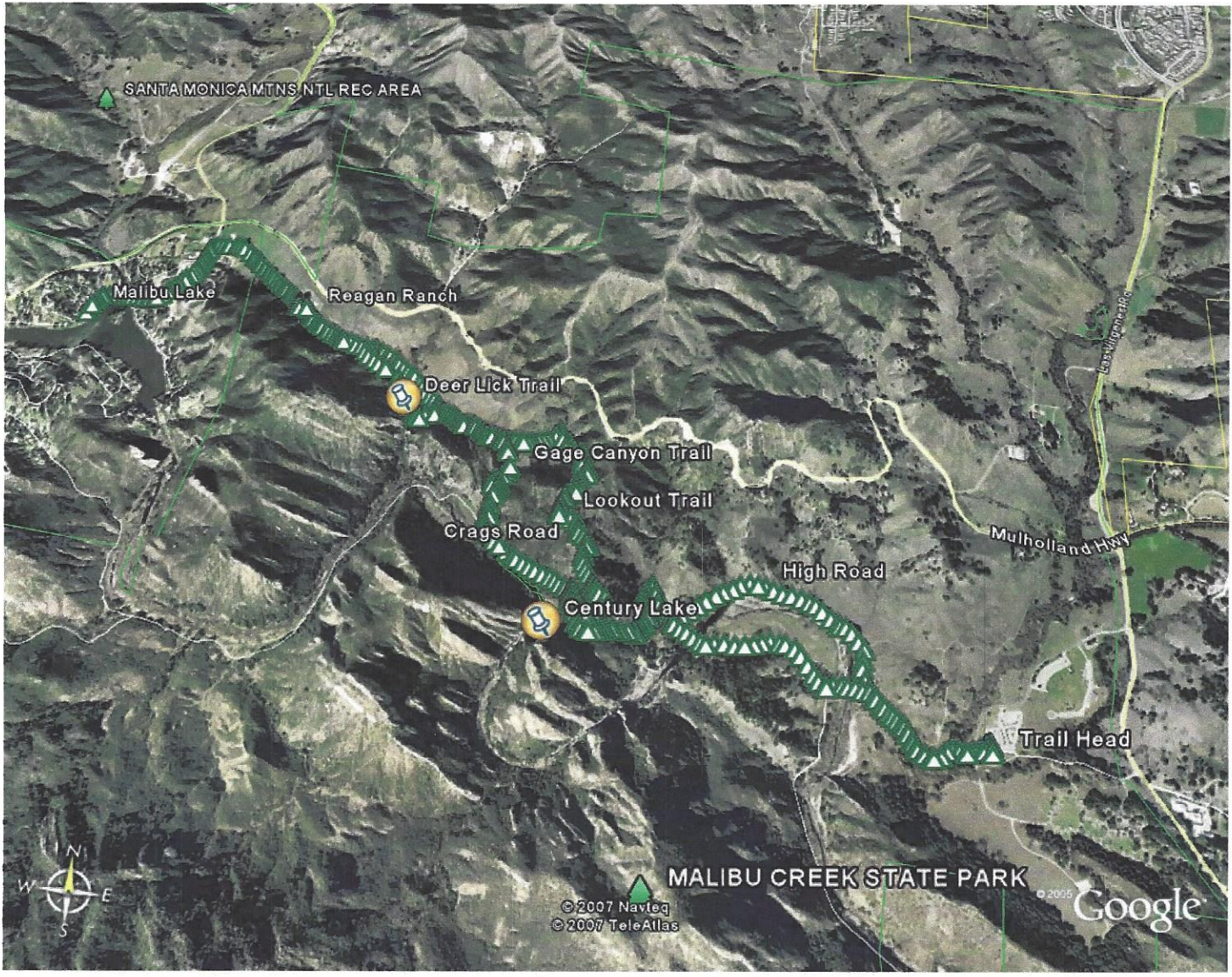
Those coming west on PCH should turn north on Malibu Canyon Road, which becomes Las Virgenes Road.

From Highway 101 going west, turn south on Las Virgenes Road.

The entrance is from Las Virgenes Road, 0.2 miles south of Mulholland Highway.

The hike will start at Malibu Creek Park and head west past Century Reservoir, then will take "Lookout Trail", and continue on west to the park headquarters on the "Yearling Trail" and have lunch. You can hike further out of the park if you want more distance.

Return will be back to "Gage Trail", turn south and return on the High Road to the start.



SANTA MONICA MOUNTAINS NATIONAL RECREATION AREA

Malibu Lake

Reagan Ranch

Deer Lick Trail

Gage Canyon Trail

Lookout Trail

Craggs Road

High Road

Century Lake

Mulholland Hwy

Trail Head

MALIBU CREEK STATE PARK

© 2007 Navteq
© 2007 TeleAtlas

© 2005 Google